

# Inter-ministerial Health and Social Care and Interaction Plan

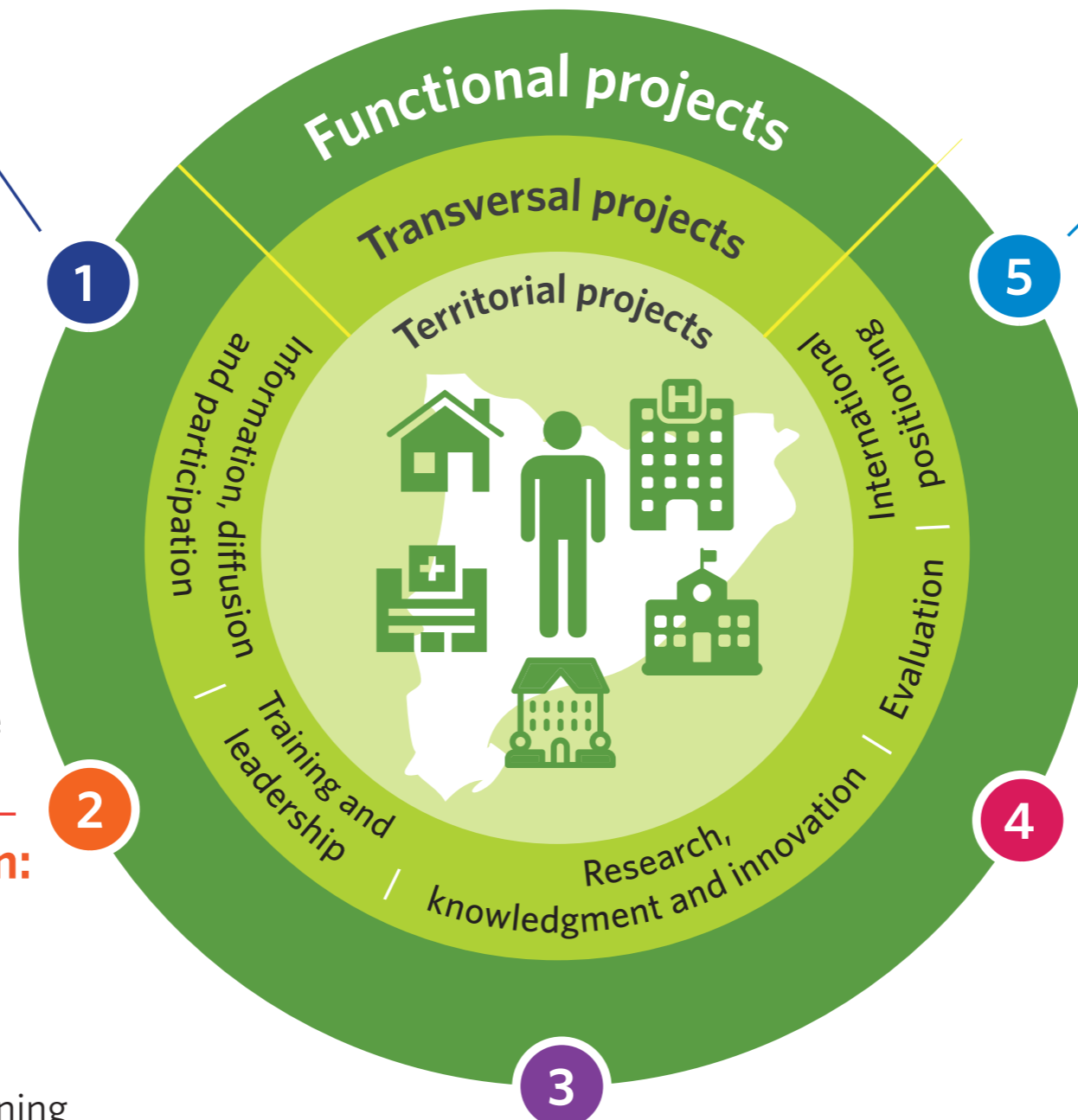
## PIAISS 2017 - 2020

### Development and integration of social and healthcare ICT systems

- Strategy for integrating information and communication systems in social and healthcare services
- Definition of the legal, ethical and functional framework for Shared Electronic Health and Care Records
- Interoperability between National Shared EHR and Electronic social Services Records
- Virtual work between health and social care

### Model of territorial implementation: Community-based integrated care partnerships

- Approval and implementation of the model
- Coordination between planning, commissioning and evaluation of the Department of Health and Department of Work, Social Affairs and Families
- Defining the basic content for shared care and collaborative practice for people in complex care conditions
- Community work: Defining the role of community-based stakeholders and organizations working in the field



### Integrated care in Mental Health

- Alignment of PIAISS and the Inter-ministerial Plan for Mental Health
- Experiences of territorial integrated care for people in situations of complexity and mental health disorders.

### Integrated healthcare to people living in residential and long-term services

- Approval of the model of healthcare
- Identification of best practices
- Adoption of evaluation frameworks
- Analysis of the impact and adoption of a strategy for improving healthcare in residential services provided by the PHC centres

### Integrated care at home

- Approval of an integrated homecare model
- Identification of best practices
- Adoption of evaluation frameworks for integrated homecare services
- Optimization of technical aids and adaptations services